

Cardinal Colorful & PANTONE® Perfect

This color selection represents a variety of the powder coatings Cardinal has as stock items in our warehouses across the United States. It is important to note that a large part of our business is custom formulation of powder and liquid coatings to specific criteria. If you cannot find the exact coating you would like, then please let us know. We would be delighted to build a product around your application.

Some projects require only a small amount of custom powder. To address this need, Cardinal developed a unique service called CardinalXpress to manufacture 50-pound batches of handcrafted, custom-designed powder. CardinalXpress powder can range from a full gloss to a 20% gloss system. Cardinal can also manufacture two gloss levels of fine texture in a custom color. We use exterior-durable, TGIC Polyester formulas that have proven to be some of the best powder to apply. CardinalXpress has a simple pricing structure to facilitate quick quotes and quick service. There simply is no reason to compromise your finish.

Cardinal is licensed by PANTONE® to accurately simulate both the PANTONE MATCHING SYSTEM® colors and the PANTONE Textile Color System® with our powder and liquid coatings. This can be done in batches as small as 50 pounds of powder or one gallon of liquid. Some bright colors will require a white base coat to create the brightness seen on the PANTONE Color Guides. Contact your Cardinal Technical Representative for more information.

Cardinal offers a full line of coatings to touch up blemishes on powder-coated products. Touch-up coatings come in aerosol cans containing either nitrocellulose lacquer or acrylic enamel. The acrylic enamel is available in 6-packs of stock Cardinal colors. All achievable colors can be mixed and matched. Most of the varicolored powders do not have a touch-up available. Cardinal offers a small touch-up bottle with a brush in the cap for quick

cover up. For projects that require the durability of powder, but cannot withstand a high baking temperature, we suggest a liquid polyurethane paint. Liquid coatings can be made to match powder-coated surfaces.

Important notes about our stock coatings:

- Exterior powders start with a T, C or P.
- Metallic exterior powders (T353-GR06, etc.) require a clear coat for exterior durability due to the effects of weathering on the aluminum flakes used to create the metallic appearance.
- H and E powders are not suitable for exterior use if you need color and gloss stability.
- Each powder has some special characteristics we would like to share with you. Please contact your local Cardinal Technical Representative for specific information before you start a new project.
- If your preferred finish is not shown, then please let us know. Many of Cardinal's coatings are customized for special applications and not shown here.



PANTONE® and other Pantone, Inc. trademarks are the property of Pantone, Inc.

These are only a few of the color possibilities from Cardinal. We accurately match any sample color that you provide. And, we are licensed to simulate the internationally-recognized PANTONE MATCHING SYSTEM® colors.

\* To maintain the appearance of exterior metallic finishes a clear topcoat is recommended.

\*\* It is suggested that these products be applied to interior products only.

The first letter of the product code refers to resin system:  
C: Polyester, E: Epoxy, H: Hybrid, P: Polyurethane, T: Polyester T.G.I.C.

These color samples are representative only and will vary from the actual color depending on the computer monitor or printer used to view them. For an accurate color, gloss and texture sample, contact a Cardinal representative.

Additional metallic finishes are available. Please contact a Cardinal representative for a full list.

Acrylic aerosol touch-up cans with excellent exterior color and gloss retention, and fast dry time are available to match the majority of the colors appearing on this color guide, or can be custom matched to your specifications.



www.cardinalpaint.com

Southern California  
Corporate Headquarters  
1329 Potrero Avenue  
South El Monte, CA 91733  
tel 626.444.9274  
fax 626.444.0382

Powder Coating  
Manufacturing  
15010 Don Julian Road  
City of Industry, CA 91746  
tel 626.937.6767  
fax 626.336.0410

Arizona  
3816 East Superior Avenue  
Phoenix, AZ 85040  
tel 602.437.2401  
fax 602.437.9251

Northern California  
890 Commercial Street  
San Jose, CA 95112  
tel 408.452.8522  
fax 408.452.0318

Colorado  
1195 East 64th Avenue  
Denver, CO 80229  
tel 303.286.1876  
fax 303.286.1878

Minnesota  
21326 Heywood Avenue  
Lakeville, MN 55044  
tel 952.469.6021  
fax 952.985.5052

Missouri  
44 Worthington Access Drive  
Maryland Heights, MO 63043  
tel 314.878.3010  
fax 314.878.0903

North Carolina  
540 Vandever Street  
High Point, NC 27260  
tel 336.882.9493  
fax 336.882.9494

Pennsylvania  
4 Harmer Street  
Warren, PA 16365  
tel 814.723.0721  
fax 814.723.1556

Texas  
4606 Brass Way  
Dallas, TX 75236  
tel 214.333.9801  
fax 214.333.9831

Washington State  
19230 144th Avenue Northeast  
Woodinville, WA 98072  
tel 425.483.5665  
fax 425.483.5401

Hong Kong  
14-22 Wang Lung Street  
Tsuen Wan, Hong Kong  
tel 852.2410.8200  
fax 852.2410.8208



Powder Coatings Without Limits



Technology/Innovation/Service/Performance





**P009-RD02**  
Dark Red 90% Gloss

**T009-RD03**  
Red 90% Gloss

**T241-RD129**  
Red Fine Texture Semi-Gloss

**T013-RD15**  
Red Hammer Semi-Gloss

**T009-RD01**  
Red 90% Gloss



**T009-OG26**  
International Orange 90% Gloss

**T009-OG01**  
Safety Orange 90% Gloss

**T009-YL71**  
Yellow 90% Gloss

**T009-YL14**  
Yellow #13538 90% Gloss

**T009-YL01**  
Yellow 90% Gloss



**T007-GN16**  
Traffic Green 70% Gloss

**T013-GN220**  
Green Hammer Semi-Gloss

**C006-GN03**  
Green 60% Gloss

**T007-GN13**  
D.O.T. Green #14066 70% Gloss

**T008-BL20**  
Dark Blue 80% Gloss



**T009-BL01**  
Blue 90% Gloss

**C241-BL210**  
Blue Fine Texture Semi-Gloss

**T009-BL05**  
Blue 90% Gloss

**H308-BL03**  
Blue 80% Gloss\*\*

**T032-BL04**  
Blue Texture #25109 Semi-Gloss



**P009-BK180**  
Black Ultra-Smooth 90% Gloss

**T009-BK12**  
Black #17038 90% Gloss

**P008-BK06**  
Black 80% Gloss

**T008-BK181**  
Black 80% Gloss

**T006-BK05**  
Black 60% Gloss

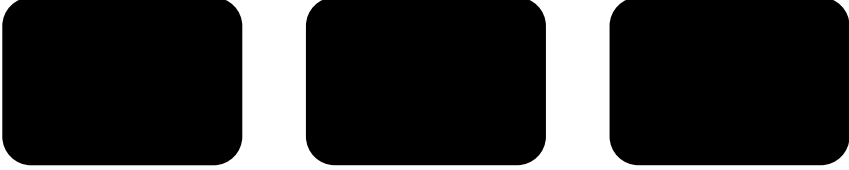


**T005-BK78**  
Black 50% Gloss

**P004-BK02**  
Black 40% Gloss

**H302-BK46**  
Black 20% Gloss\*\*

**T002-BK08**  
Black #27038 20% Gloss



**T001-BK120**  
Black 10% Gloss

**E300-BK147**  
Flat Black\*\*

**E300-BK11**  
Flat Black 3% Gloss\*\*



**C241-BK01**  
Black Texture Semi-Gloss

**T241-BK59**  
Black Texture Semi-Gloss

**C241-BK110**  
Black Extra Fine Texture Semi-Gloss

**C241-BK109**  
Black Fine Texture Semi-Gloss

**E141-BK19**  
Black Texture Low-Gloss\*\*



**P141-BK03**  
Black Fine Texture Low-Gloss

**C081-BK176**  
Black Wrinkle Semi-Gloss

**E311-BK04**  
Black Hammer Low-Gloss\*\*

**T013-BK62**  
Black Hammer Semi-Gloss



**T032-BR62**  
Brown Fine Texture Semi-Gloss

**P004-BR23**  
Bronze 40% Gloss

**P004-GR09**  
ANSI #49 Gray 40% Gloss

**P004-GR16**  
ANSI #61 Gray 40% Gloss

**H305-GR10**  
Light Gunmetal Gray 50% Gloss\*\*

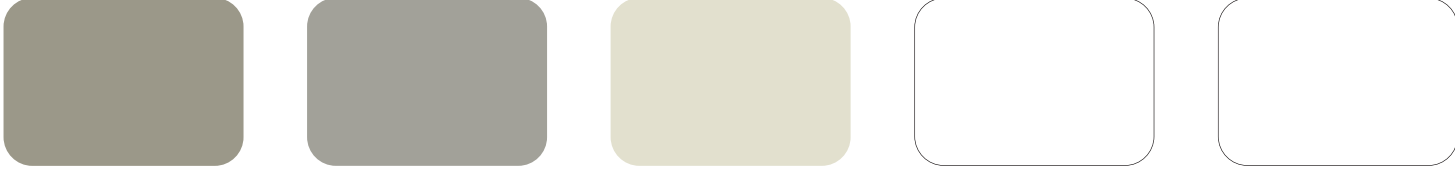


**P003-GR01**  
Gray #26307 30% Gloss

**H303-WH16**  
Antique White 30% Gloss\*\*

**P005-WH01**  
White #27875 50% Gloss

**T002-WH08**  
White 20% Gloss



**T008-GR736**  
Gray ANSI 61 80% Gloss

**P008-GR21**  
RAL 7042 Gray 80% Gloss

**T009-GR230**  
RAL 7035 Gray 90% Gloss

**T009-WH13**  
White 90% Gloss

**P009-WH14**  
White 90% Gloss



**H309-WH27**  
Frost White 90% Gloss\*\*

**T032-BG03**  
Beige Texture Semi-Gloss

**T032-WH15**  
White Texture Semi-Gloss

**C031-WH120**  
White Texture Semi-Gloss

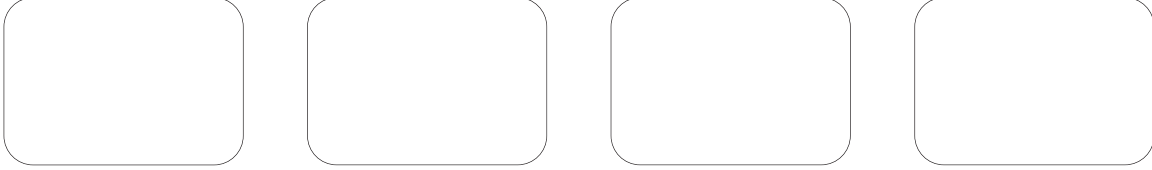


**T009-BG16**  
Designer Beige 90% Gloss

**P009-BG02**  
Beige 90% Gloss

**T009-BG01**  
Almond 90% Gloss

**H308-WH25**  
White 80% Gloss\*\*

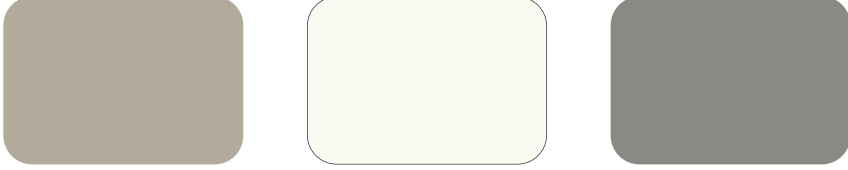


**P009-WH04**  
White 90% Gloss

**T009-WH11**  
White 90% Gloss

**T009-WH12**  
Hi-Reflective White 90% Gloss

**T007-WH121**  
White 70% Gloss



**E305-GR533**  
Gray Primer 50% Gloss\*\*

**E305-WH243**  
White Primer 50% Gloss \*\*

**H304-GR312**  
Anti-Gassing Primer 40% Gloss\*\*

**If a clear topcoat finish is preferred**  
T209-CL01 90% Gloss Clear TGIC Polyester  
T002-CL02 20% Gloss Clear TGIC Polyester  
T032-CL11 Semi-Gloss Texture Clear TGIC Polyester  
P001-CL15 Low-Gloss Smooth Clear Polyurethane

The samples on this card are representative only and vary slightly from actual gloss, color and texture.



**C241-GR484**  
Dark Gray Fine Texture Semi-Gloss

**C241-GR07**  
Gray Fine Texture Semi-Gloss

**C241-GR305**  
Bay Gray Fine Texture Semi-Gloss

**T243-GR522**  
Flint Gray Fine Texture Semi-Gloss

**T241-GR11**  
Platinum Gray Fine Texture Semi-Gloss



**T031-WH06**  
Pearl White Fine Texture Semi-Gloss

**T243-GR301**  
Quartz Gray Fine Texture Semi-Gloss

**T241-GR142**  
Light Gray Fine Texture Semi-Gloss

**T241-BG137**  
Beige Fine Texture Semi-Gloss

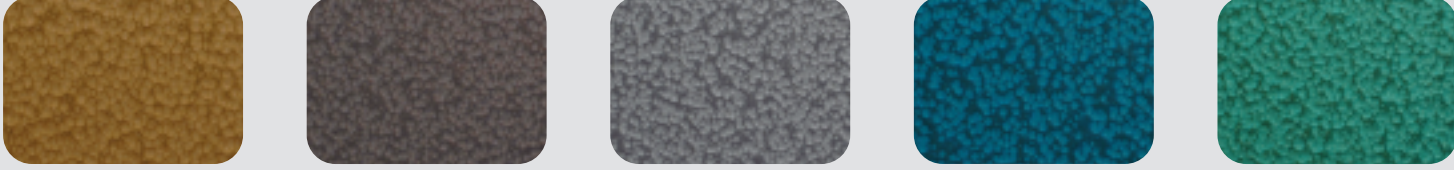


**T375-BK07**  
Copper Vein Semi-Gloss\*

**T375-BK10**  
Gold Vein Semi-Gloss\*

**T375-BK26**  
Silver Vein Semi-Gloss\*

**T075-WH34**  
Black/White Vein Semi-Gloss



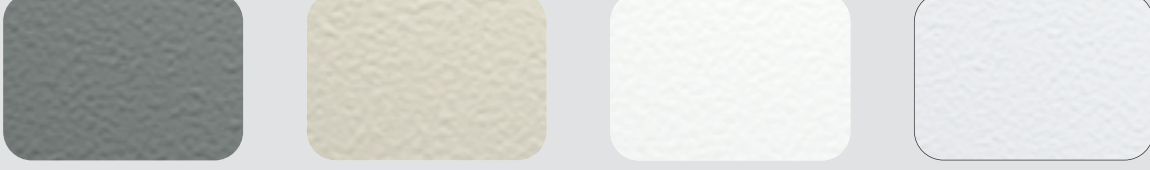
**T064-BR24**  
Bronze Hammertone Semi-Gloss

**T064-GR660**  
Gray Hammertone Semi-Gloss

**T064-GR05**  
Silver Hammertone Semi-Gloss

**T064-BL95**  
Blue Hammertone Semi-Gloss

**T064-GN81**  
Green Hammertone Semi-Gloss

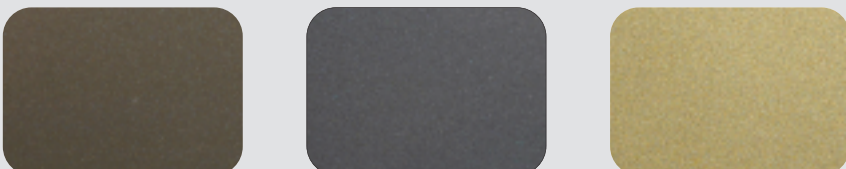


**C013-GR08**  
Gray Hammer Semi-Gloss

**T013-BG38**  
Beige Hammer Semi-Gloss

**T012-WH260**  
White Hammer Semi-Gloss

**T013-WH09**  
White Hammer Semi-Gloss



**T025-BR01**  
Bronze Pearlescent 50% Gloss

**T028-GR02**  
Steel Gray Pearlescent 80% Gloss

**T353-VL02**  
Brass 30% Gloss\*



**T357-GR105**  
Silver Metallic 70% Gloss\*

**T353-GR06**  
Silver Metallic 30% Gloss\*

**T358-GR539**  
Chrome 80% Gloss\*



**T391-BG290**  
Metallic Bronze Semi-Gloss Texture\*

**T091-GR309**  
Mock Rock Texture Semi-Gloss

**C291-GN20**  
Patina Texture Semi-Gloss

**T091-GN57**  
Verdigris Texture Semi-Gloss

**T091-BR47**  
Rust Texture Semi-Gloss

Computer Colors

Specialty Coatings